

NZ DIPLOMA IN ARCHITECTURAL TECHNOLOGY 2025



Information for international applicants

Napier

Every building needs an Architectural Technologist. The skills you learn from this programme are valuable wherever there is construction. This qualification is for you if you are wishing to work as an architectural technician but also provides recognition of knowledge and skills if you are already working in the role.

Gain the knowledge, skills and attitudes required to become a productive member of an architectural design team - undertake practical learning to learn the whole process of producing architectural drawings, from establishing a client's requirements right through to submission of the final designs.

Upon completing Year One you will be able to:

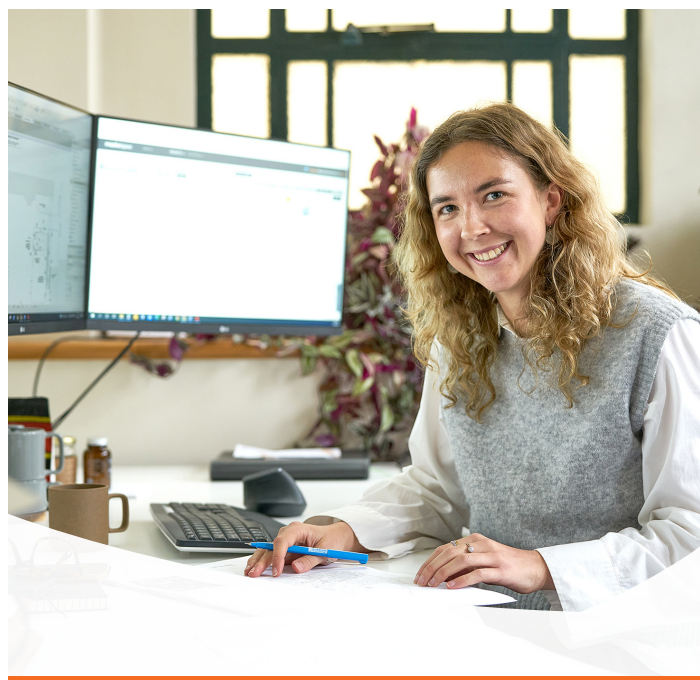
- Use basic industry knowledge to evaluate design principles for small building projects in a design, building or construction related environment.
- Carry out feasibility studies for small buildings.
- Be able to communicate a concept and building design and prepare approval documentation for a building project in accordance with a design brief.
- Evaluate the performance of and select standard and non-specific materials and finishes to be used in the building process.
- Prepare, organise and present architectural working drawings for small buildings using manual and digital technologies in accordance with statutory and regulatory environment.

As a graduate of this qualification you will be able to:

- Apply comprehensive knowledge of construction principles and methodology to evaluate design for small and medium building projects in a design, building or construction related environment.
- Carry out feasibility studies for small, medium and large buildings.
- Establish the clients' requirements, develop and communicate a concept and building design, and prepare approval documentation for a building project in accordance with a clients' brief.
- Evaluate the performance of and select materials and finishes to be used in the building process.
- Prepare, organise and present architectural documentation for small and medium buildings using manual and digital technologies in accordance with the legislative and regulatory environment.
- Apply knowledge of the roles and responsibilities, documentation and administrative requirements, including the tendering process to construction contract management processes.
- Apply organisational principles, use digital technologies and industry best practice to communicate effectively with parties to a construction contract.

CAREER OPPORTUNITIES

As a graduate you will provide the construction industry with the essential knowledge and skills required to enter employment as an architectural technician on small and medium scale building projects of limited complexity through all stages to completion. Additionally, you may be competent to assist with large and/or complex projects.



NZ DIPLOMA IN ARCHITECTURAL TECHNOLOGY

Start	17 February
Length	2 years full-time
Level	6
Credits	240 credits (2 years) - 120 credits per year
Fees ¹	NZ\$26,000 per year
IELTS	6.0 (academic) with no band lower than 5.5 or equivalent OR accepted international equivalent qualification
Class times	15 hours per week on-campus
Self-directed study	Approximately 90 minutes for each classroom hour

CAREER OUTLOOK

Visit the following websites for the latest information about job opportunities in New Zealand for your chosen career path.

careers.govt.nz

mbie.govt.nz

immigration.govt.nz

¹ All fees shown in this information are in New Zealand dollars and include Goods and Services Tax (GST) at current rates. If you need to study for more than one year to complete your qualification, your fees in the second year, and subsequent years, will not be known when you first enrol.



TIMETABLE

Your study time will be made up of contact time (class times, tutorials, industry-based learning) and non-contact time (your own self-directed study).

CONTACT TIME

On-campus classes are usually scheduled between 8.00am-5.00pm, Monday to Friday.

Full-time students spend approximately 15 hours per week on campus.

NON-CONTACT TIME

You should plan to spend 1-2 hours per week, per classroom hour, on self-directed study.

ENTRY CRITERIA¹

ACADEMIC REQUIREMENTS

Successful applicants for entry will have a minimum of:

- Level 2 NCEA; or
- Successful completion of a relevant bridging/foundation programme with content that matches the preferred subjects and vocational pathways.

SPECIAL ADMISSION

- Granted to applicants aged 20 and over with no formal qualifications but who are enthusiastic and motivated students, or they may have evidence of relevant prior learning and experience.
- Applicants from high school with subject strengths in English, mathematics, art, physics, graphics and design and with standards from the creative industries or construction and infrastructure vocational pathways are preferred.

ENGLISH LANGUAGE ENTRY REQUIREMENTS²

PTE (Academic) score of 50 with no band score lower than 42 or IELTS (Academic) score of 6.0 with no band score lower than 5.5 (or equivalent) achieved within the last two years.

ASSESSMENTS

Assessments include theory assignments, tests, practical work assignments and projects. Assessments are continuous throughout the year.

FACILITIES

Facilities include computer rooms and laboratories with up-to-date specialist design software.

THE EXPERIENCE YOU NEED & THE SUPPORT TO SUCCEED

When you study at EIT you'll get the kind of experiences that will help you gain the knowledge and skills to get ahead.

You'll also be supported by lecturers and tutors who are here for you, within a learning environment where you are treated as an individual, not just a number. They'll know your name and you'll receive one-on-one attention to make sure you get the support to succeed.



1. To study onshore in New Zealand, students must meet current Immigration New Zealand requirements for a student visa. For more information please see the [Immigration New Zealand website](#).

2. Further information about NZQA English language entry requirements for international students can be found at www2.nzqa.govt.nz/tertiary/english-language-entry-requirements-for-international-students/



COURSE DESCRIPTIONS

YEAR ONE - Level 5

COURSE NO.	BRIEF DESCRIPTION	LEVEL	CREDITS
CONS5001	Introduction to Construction	5	15
CONS5002	Materials and Structural Principles	5	15
CONS5003	Environment	5	15
CONS5004	Services	5	15
CONS5005	Construction 1: Residential	5	15
CONS5706	Drawing 1	5	15
CONS5707	Scoping and Preliminary Design 1	5	15
CONS5708	Documentation 1	5	15

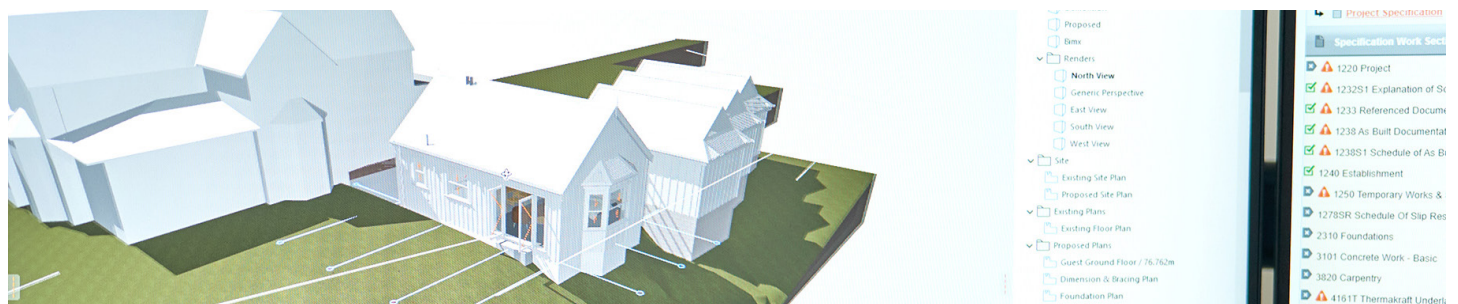
YEAR TWO - Level 6

COURSE NO.	BRIEF DESCRIPTION	LEVEL	CREDITS
CONS6001	Construction 2: Commercial	6	15
CONS6702	Contract Administration	6	15
CONS6703	Design in the Built Environment	6	15
CONS6704	Detailing	6	15
CONS6705	Documentation 2	6	15
CONS6706	Scoping and Preliminary Design 2	6	15
CONS6707	Virtual Design and Construction	6	15
CONS6708	Industry Project	6	15

THE EXPERIENCE YOU NEED & THE SUPPORT TO SUCCEED

When you study at EIT you'll get the kind of experiences that will help you gain the knowledge and skills to get ahead.

You'll also be supported by lecturers and tutors who are here for you, within a learning environment where you are treated as an individual, not just a number. They'll know your name and you'll receive one-on-one attention to make sure you get the support to succeed.



Disclaimer: All information pertains to international students, and is correct at the time of publication but is subject to change without notice. The programme fees, other costs, entry requirements, duration and programme start dates are for 2025 and are listed as a guide only. Conditions apply. EIT (a Business Division of Te Pūkenga – New Zealand Institute of Skills and Technology) reserves the right to cancel or postpone any programme or course for any reason and shall not be liable for any claim other than that proportion of the programme fee which the cancelled or postponed portion bears.